



EGG™

The Egg™ is one of the triumphs of Arne Jacobsen's total design - a sculptural contrast to the SAS Royal Hotel's almost exclusively vertical and horizontal surfaces. The Egg sprang from a new technique, which Arne Jacobsen was the first to use; a strong foam inner shell underneath the upholstery. Experience originality and design that ages with beauty with the Egg in leather and indulge in its sculptural curves that will last for generations. When Arne Jacobsen in the end of the 1950's designed the SAS Royal Hotel in Copenhagen, he too created the Egg™, the Swan™, the Swan Sofa™, the Series 3300™ and the Drop™. With this furniture Arne Jacobsen wrote history within Danish design worldwide.



REPUBLIC OF **Fritz Hansen®**

PRODUCT DESCRIPTION

Arne Jacobsen designed the Egg™ for the lobby and reception areas in the SAS Royal Hotel, in Copenhagen. The commission to design every element of the hotel building as well as the furniture was Jacobsen's grand opportunity to put his theories of integrated design and architecture into practice. The Egg is one of the triumphs of Jacobsen's total design - a sculptural contrast to the building's almost exclusively vertical and horizontal surfaces. Like a sculptor, Jacobsen strove to find the shell's perfect shape in clay at home in his own garage. Because of the unique shape, the Egg guarantees a bit of privacy in otherwise public spaces and the Egg - with or without footstool - is ideal for lounge and waiting areas as well as the home.

The shell of the Egg is made of polyurethane foam with glass fibre reinforcement. The foam for the upholstery and the seat cushion is cold cured polyurethane foam. The shell has an adjustable tilt fitting which can be adjusted to the weight of the individual user. The tilt mechanism is made of steel sheet, steel tubing and spring steel. The adjustment handle is of polished drawn stainless steel. The base consists of a satin-polished swivel centre part of welded steel tubing (dia. 38 x 2 mm), a spindle of dia. 28 mm machining steel and a 4-star base in injection moulded aluminium. The leg ferrules are in black-grey synthetic material.

A matching footstool is available for the chair. The shell of the footstool is made of synthetic material, upholstered with cold-cured foam and covered with fabric or leather. The foam for the upholstery and the seat cushion is cold-cured polyurethane foam. The foot stool is without swivel function. The base is a star-shaped base of satin polished aluminium. The ferrules are moulded black polyamide.

DESIGN

Arne Jacobsen, 1958.



ARNE JACOBSEN 1902-1971

The collaboration between Arne Jacobsen and Fritz Hansen dates back to 1934. It was not until 1952 however that the team got its breakthrough with the An™. It was succeeded by Series 7™ in 1955, thereby enabling both Jacobsen and Fritz Hansen to write their names into furniture history.

Arne Jacobsen was incredibly productive, both as an architect and a designer. At the end of the 1950s he designed the SAS Royal Hotel in Copenhagen, also designing the Egg™, the Swan™, the Swan Sofa™ and Series 3300™ for the same project.

UPHOLSTERY

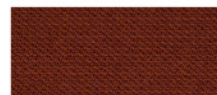
The Egg™ comes upholstered in both fabric and leather. The upholstery is available in the following selection of fabrics and leathers:

Fritz Hansen Colours:

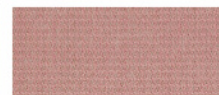
The Fritz Hansen Colours are created exclusively by Republic of Fritz Hansen's own design team and consist of serene pale pink, warm and earthy terracotta orange and finally deep ocean blue.



BLUE
FABRIC: FH 6001



ORANGE
FABRIC: FH 5901



PINK
FABRIC: FH 5801

Fabrics:

Canvas, Capture, Comfort, Diablo, Divina, Divina Melange, Divina MD, Fame, Fiord, Hallingdal, Steelcut, Steelcut Trio, Sunniva and Tonus.

Leathers:

Basic, Classic, Rustic, Natural, White, Optical white, Elegance and Sense.



WARRANTY

A five-year warranty against manufacturing defects in standard products (materials and workmanship). Wear, tear and damage to the product are not covered under this warranty. Claims from end users under the guarantee must be submitted to the vendor from whom the product was purchased. All measurements are indicative.

STANDARD WARRANTY:

5 years

MY REPUBLIC EXTENDED WARRANTY:

5 years: Fabric, Tilt, Swivel, Automatic return, Leather: Basic.

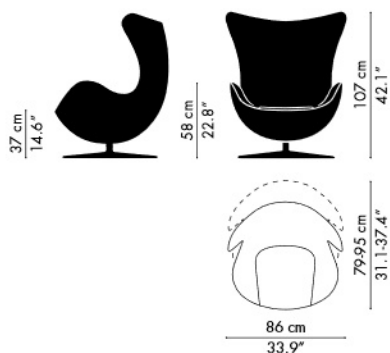
10 years: Base, Shell, Leather: Classic, Rustic, Natural, White, Optical white, Elegance, Sense.

To obtain an extended warranty offered through My Republic the products should be registered online. Go to www.fritzhenzen.com/my-republic to register.

VARIATIONS & DIMENSIONS

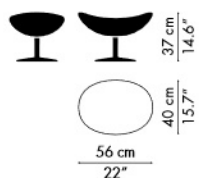
3316

THE MEASUREMENTS CAN VARY +/- 5 %



3127

THE MEASUREMENTS CAN VARY +/- 5 %



ENVIRONMENTAL PRODUCT INFORMATION

Lounge chair and footstool for lounge and waiting areas and private use.

MATERIALS

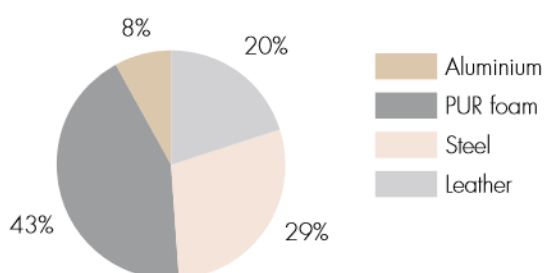
The shell is made of polyurethane (PUR) foam with embedded steel frame and glass fibre as reinforcement. The foam for the upholstery and the seat cushion is cold cured PUR foam.

The tilt mechanism is made of steel. The adjustment handle is of polished stainless steel. The base consists of a satin polished chromed steel tube which is connected to a base in aluminium through a cone assembly. Toes are made of polyamide.

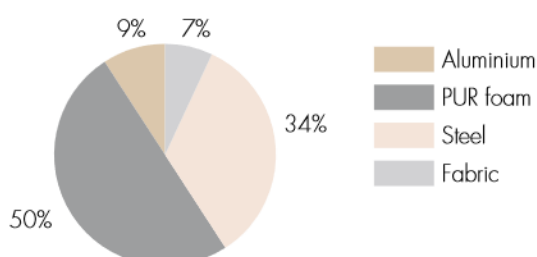
Materials in %

The below figures illustrate the weight allocation between the different materials used. Items with a weight <1% of the total product weight are not included in the figures below. The upholstery percentage may vary depending on the upholstery type.

Model 3316 w. leather upholstery:



Model 3316 w. fabric upholstery:



PACKAGING MATERIAL

The chair is covered with a plastic bag and shipped and protected in cardboard. All packaging material can be recycled

REPAIR, DISPOSAL AND REUSE

In the case of disposal the chair and footstool can be disassembled into two parts (shell and base). The shell of the chair requires special handling because of the embedded steel frame. The base and all other metal parts can be recycled. Check local regulations for recycling in your area and whether there is potential for reuse.

MANUFACTURING PROCESSES

Suppliers

Before Fritz Hansen enters into a cooperation with a supplier, their environmental stance is examined as part of the company's quality and environmental management systems.

Chrome surface treatment

Fritz Hansen uses both trivalent chromium (chrome 3) and hexavalent chromium (chrome 6) for chromium plating. Fritz Hansen will convert to solely using trivalent chromium (chrome 3) when the capacity in the industry allows it.

Metals

Production scrap (steel and aluminium) is collected for recycling.

Foam

Remnants from foam production are granulated, wherever possible, for recycling.

Plastic

Plastic components are identified with a recycling code whenever possible to facilitate the return of the materials to the recycling stream.

MANAGEMENT SYSTEMS

Environmental Systems

We are aware of our environmental responsibilities. Therefore, in the autumn of 2004 Fritz Hansen obtained the ISO 14001 certification in the environmental management system. The certification is a guarantee to our customers and the authorities that we comply with the requirements of the ISO 14001:2015 standard.

Quality System

Fritz Hansen is also certified according to the quality system ISO 9001:2015.

Employee Health and Safety

Fritz Hansen aims at meeting or exceeding OSHA standards.

ENVIRONMENTAL PRODUCT CERTIFICATION

GreenGuard

The Egg™ chair is GreenGuard Gold certified. GreenGuard certification is an emission certification for indoor air quality. Products with ultra-low-emitting materials can achieve GreenGuard Gold.

LONG LIFETIME

A long lifetime of a piece of furniture is an important environmental factor. Fritz Hansen aims to obtain a long lifetime through timeless design and strict requirements for strength and durability. The chair complies with the requirements for EN 15373:2008 Safety, strength, durability and stability for non domestic seating, general use.

MORE INFORMATION

Please visit www.fritzhanzen.com for additional environmental information and to download our Perspective on Sustainability & Corporate Environmental Policy.