
BuzziKey Soft

Product Specification Sheet

This document contains technical information about the BuzziKey Soft




www.buzzi.space


A playful acoustic panel attuned to modern spaces

BuzziKey Soft offers exceptional sound-absorption capabilities ensuring an acoustically well-balanced space that is never out of tune! The soft exterior and chamfered edges create an intriguing blend of contrasts that help break the hard surfaces and lines of a space. BuzziKey Soft lightens and softens walls all while upholding a sense of familiarity with the classic acoustic panel. It's back to basics, yet attuned to modern spaces and interiors alike. Play with perspectives and add depth of field with different models, available in various sizes and depths, and choose your favorite color combinations for a distinctive look.

Design by BuzziSpace Studio

General

 BuzziKey Soft Square | Rectangular
Wall mounted

Back: MDF
Filling: Acoustic foam
 Cover: Fabric, Rough, Trevira CS+ | CS, Revive 1, Revive 2, Terra, Clara 2, Remix 2, Velvet, Hero, Tonus 4, Memory 2 or Matrix

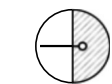
 Dry Use

 Assembled

Certifications



Acoustics



Absorption



Low tone



Mid tone



High tone

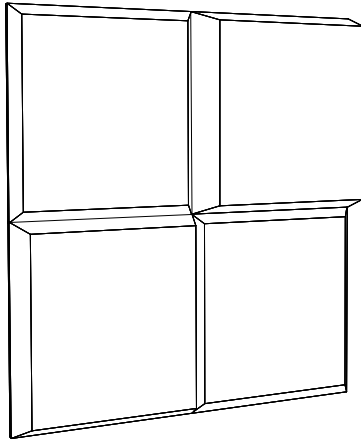
Content

Configurations	3
Fabrics	4
Fixing Systems	8
Dimensions	9
Acoustics	10

Configurations

BuzziKey Soft Square

Example composition (can be bought per piece)



Back: MDF

Filling: Acoustic foam



Cover: Fabric, Rough, Trevira CS+ | CS, Revive 1, Revive 2, Terra, Clara 2, Remix 2, Velvet, Hero, Tonus 4, Memory 2 or Matrix

SQ-4: W 59,5 cm H 59,5 cm D 4 cm
W 23.43" H 23.43" D 1.57"



SQ-8: W 59,5 cm H 59,5 cm D 8 cm
W 23.43" H 23.43" D 3.15"

SQ-12: W 59,5 cm H 59,5 cm D 12 cm
W 23.43" H 23.43" D 4.72"

SQ-4: 2,9 kg
6.39 lbs

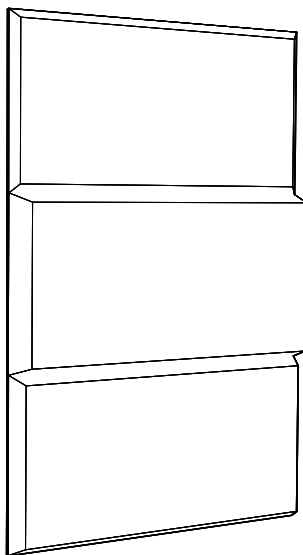


SQ-8: 3,3 kg
7.28 lbs

SQ-12: 3,7 kg
8.16 lbs

BuzziKey Soft Rectangular

Example composition (can be bought per piece)



Back: MDF

Filling: Acoustic foam



Cover: Fabric, Rough, Trevira CS+ | CS, Revive 1, Revive 2, Terra, Clara 2, Remix 2, Velvet, Hero, Tonus 4, Memory 2 or Matrix

R-4: W 119 cm H 59,5 cm D 4 cm
W 46.85" H 23.43" D 1.57"



R-8: W 119 cm H 59,5 cm D 8 cm
W 46.85" H 23.43" D 3.15"

R-12: W 119 cm H 59,5 cm D 12 cm
W 46.85" H 23.43" D 4.72"

R-4: 5,8 kg
12.79 lbs

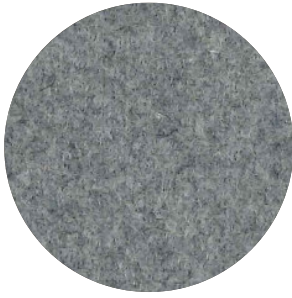


R-8: 6,6 kg
14.55 lbs

R-12: 7,4 kg
16.31 lbs

Fabrics

Fabric



Category A

Composition 70% Recycled Wool, 25% Recycled Polyacryl,
5% Recycled Other Fabrics

Weight 405 g/m² | 11.94 oz/yd²

Abrasion resistance 40.000 Martindale, 50,000 Wyzenbeek

Flammability EU: EN 1021.1/2006 | BS EN 1021.1/2006 (cigarette).
EN 1021.2/2006 | BS EN 1021.2/2006 (match)
USA: CAL TB 117 | ASTM E84 CLASS A

Fastness to light EU: 4 | USA 4

Fastness to rubbing EU: Wet 3-4 | Dry 4-5

Fastness to crocking USA: Wet 5 | Dry 5



Rough



Category A

Composition 100% Polyacryl

Weight 456 g/m² | 13.45 oz/yd²

Abrasion resistance 40.000 Martindale

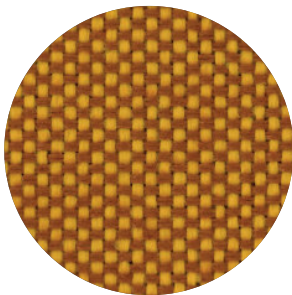
Flammability EU: EN 1021.1/2006 | BS EN 1021.1/2006 (cigarette)
USA: CAL TB TB 117

Fastness to light EU: 5

Fastness to rubbing EU: Wet: 3 | Dry: 3



Trevira CS+ | CS



Category A

Weight 420 g/m² | 12.39 oz/yd²

Composition 100% Polyester, Trevira CS

Abrasion resistance 100.000 Martindale, 90,000 Wyzenbeek

Flammability BS 5852 part II: CRIB 5 | BS 7176 Medium Hazard
USA: CAL TB 117 | M1 | B1 | EN 1021/1-2 | C1 |
IMO Res. A652 (16)

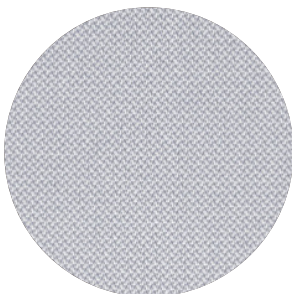
Fastness to light EU: 6 | USA 5

Fastness to rubbing EU: Wet 4-5 | Dry 4-5

Fastness to crocking USA: Wet 5 | Dry 5



Revive 1



Category A

Composition 100% recycled polyester FR

Weight 430 g/lin.m

Abrasion resistance 60.000 Martindale rubs, EN ISO 12947

Flammability EN 1021-1/2 | DIN 4102 B1 | Önorm B1/Q1
UNI 9175 11M | US Cal. Tech. Bull. 117
IMO A.652 (16)

Fastness to light Note 5-7, ISO 105-B02

Fastness to rubbing (ISO) dry 5, wet 4-5

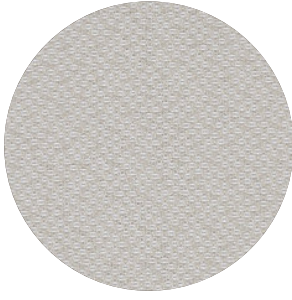
Pilling Note 4-5, EN ISO 12945



kvadrat

Revive 2

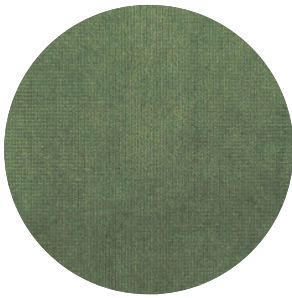
kvadrat



Category A
Composition 100% recycled polyester FR
Weight 420 g/lin.m
Abrasion resistance 45.000 Martindale rubs, EN ISO 12947
Flammability EN 1021-1/2 | DIN 4102 B1 | Önorm B1/Q1
UNI 9175 11M | US Cal. Tech. Bull. 117
IMO A.652 (16)
Fastness to light Note 5-7, ISO 105-B02
Fastness to rubbing (ISO) dry 5, wet 4-5
Pilling Note 4-5, EN ISO 12945



Velvet



Category B
Composition 100% PES
Weight 375 g/m² | 11.06 oz/yd²
Abrasion resistance > 100.000 Martindale
Fastness to light EU: 4-5
Fastness to rubbing EU: Wet 4 | Dry 4-5
Pilling EU: 4-5

Terra

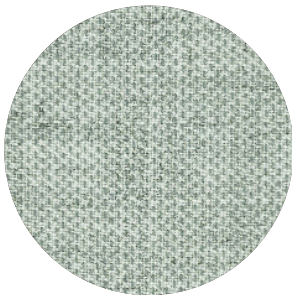


Category B
Composition 100% Pure New Wool
Weight 370 g/m² | 10.91 oz/yd²
Abrasion resistance 40.000 Martindale, 25.000 Wyzenbeek
Flammability EU: BS5852 CRIB 5 | BS5867 PART 2 : 2008 : TYPE B
EN: 1021.2/2006 | USA: CAL TB 117
Fastness to light EU 5 | USA 5
Fastness to rubbing EU: Wet 4 | Dry 4
Fastness to crocking USA: Wet 4 | Dry 4



Clara 2

kvadrat



Category B
Composition 92% new wool, 8% nylon
Weight 400 g/lin.m
Abrasion resistance 80.000 Martindale rubs, EN ISO 12947
Flammability EN 1021-1/2 | BS 5852, ignition source 2-3 | DIN 4102 B2
NF D 60 013 | UNI 9175 11M | US Cal. Tech. Bull. 117, Sec. E
NFPA 260 | IMO A.652(16)
Fastness to light Note 5-7, ISO 105-B02
Fastness to rubbing (ISO) dry 4-5, wet 4
Pilling Note 4, EN ISO 12945



Remix 2

kvadrat



Category B

Composition 90% new wool, 10% nylon

Weight 415 g/lin.m

Abrasion resistance 100.000 Martindale rubs, EN ISO 12947

Flammability EN 1021-1/2 | BS 5852 part 1

Önorm B1/Q1 | NF D 60 013 | UNI 9175, 1IM

AS/NZS 1530.3 | Cal. Tech. Bull. 117-2013

NFPA 260 | IMO FTP Code 2010:Part 8

Fastness to light Note 5-7, ISO 105-B02

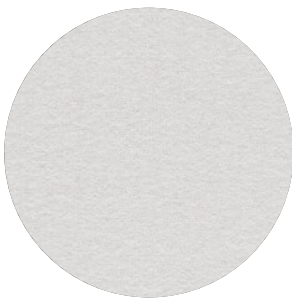
Fastness to rubbing (ISO) dry 4-5, wet 4

Pilling Note 4, EN ISO 12945



Hero

kvadrat



Category C

Composition 96% new wool, 4% nylon

Weight 580 g/lin.m

Abrasion resistance 45.000 Martindale rubs, EN ISO 12947

Flammability EN 1021-1/2 | DIN 4102 B2 | NF D 60 013

UNI 9175 1IM | US Cal. Bull. 117-2013 | NFPA 260

IMO A.652 (16)

Fastness to light Note 5-6, ISO 105-B02

Fastness to rubbing (ISO) dry 4-5, wet 4-5

Pilling Note 3-4, EN ISO 12945



Tonus 4

kvadrat



Category D

Composition 90% new wool, 10% Helanca

Weight 665 g/lin.m

Abrasion resistance 100.000 Martindale rubs, EN ISO 12947

Flammability EN 1021-1/2 | BS 5852 part 1 | DIN 4102 B2

Önorm B1/Q1 | NF D 60 013 | UNI 9175 1IM

US Cal. Bull. 117-2013 | NFPA 260 | IMO A.652 (16)

Fastness to light Note 5-7, ISO 105-B02

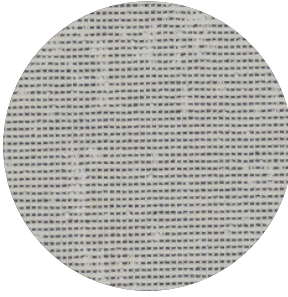
Fastness to rubbing (ISO) dry 3-5, wet 3-5

Pilling Note 3, EN ISO 12945



Memory 2

kvadrat



Category E

Composition 100% Trevira CS

Weight 700 g/lin.m

Abrasion resistance

35.000 rubs acc. to the Martindale method, EN ISO 12947

Flammability EN 1021-1/2 | DIN 4102 B1 | Önorm B1/Q1
NF D 60 013 | NF P 92 507 M1 | UNI 9175 1IM
UNI 9177 classe 1 | US Cal. Tech. Bull. 117
IMO A.652 (16)

Fastness to light Note 5-8, ISO 105-B02

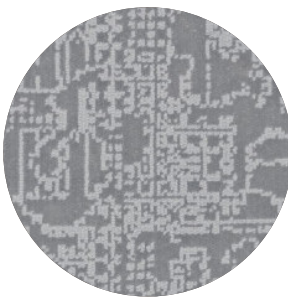
Fastness to rubbing (ISO) dry 4-5, wet 4-5

Pilling Note 4, EN ISO 12945



Matrix

kvadrat



Category F

Composition 100% Trevira CS

Weight 760 g/lin.m

Abrasion resistance

App. 60.000 rubs acc. to the Martindale method, EN ISO 12947

Flammability EN 1021-1/2 | BS 5852 crib 5 | BS 5867 part 2 type B
DIN 4102 B1 | Önorm B1/Q1 | NF D 60 013
UNI 9175 1IM | US Cal. Tech. Bull. 117 | NFPA 701
IMO A.652 (16)

Fastness to light Note 5-7, ISO 105-B02

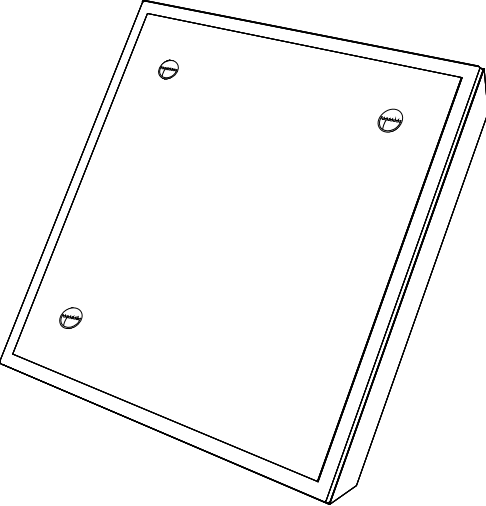
Fastness to rubbing (ISO) dry 4-5, wet 4-5

Pilling Note 4, EN ISO 12945



Fixing Systems

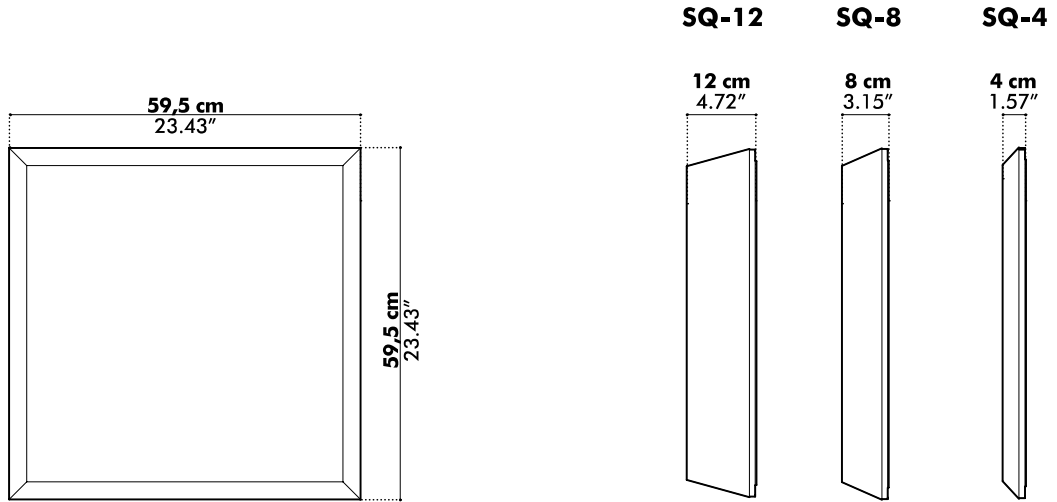
Fixing System Wall (included)



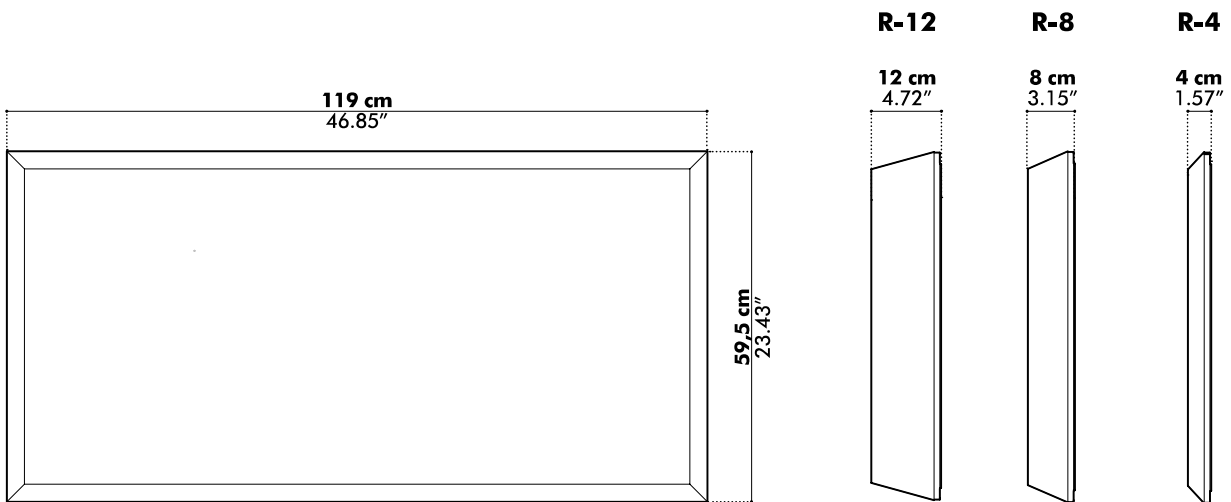
BuzziKey Soft Fixing System.
3 pcs for BuzziKey Soft Square
3 pcs for BuzziKey Soft Rectangular
(horizontal or vertical mounting)

Dimensions BuzziKey Soft

BuzziKey Soft Square



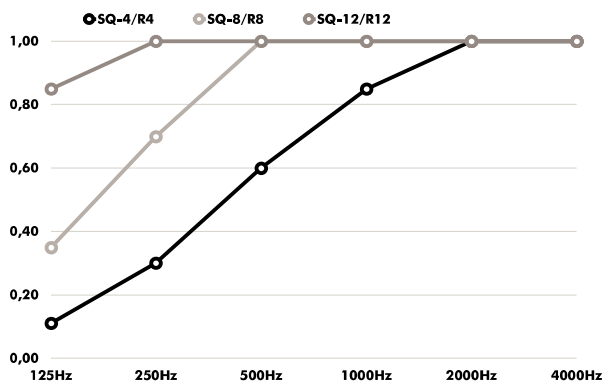
BuzziKey Soft Rectangular



Acoustics

BuzziKey Soft

Absorption coefficient



Hz	α^s SQ-4/R4	α^s SQ-8/R8	α^s SQ-12/R12
125	0.11	0.35	0.58
250	0.30	0.70	1.00
500	0.60	1.00	1.00
1000	0.85	1.00	1.00
2000	1.00	1.00	1.00
4000	1.00	1.00	1.00

Absorption Values

SQ4/R4

α_w
(ISO 11654) **0.70**

NRC
(ASTM - C423) **0.70**

SAA
(ASTM-C423)

SQ8/R8

α_w
(ISO 11654) **0.95**

NRC
(ASTM - C423) **0.95**

SAA
(ASTM-C423)

SQ12/R12

α_w
(ISO 11654) **1.00**

NRC
(ASTM - C423) **1.00**

SAA
(ASTM-C423)

Glossary

All calculations are based on accredited lab measurements, official document available on Buzzi.Space

Definitions

α_w Weighted absorption coefficient (ISO 11654)

NRC Noise reduction coefficient (ASTM - C423)

SAA Sound absorption average (ASTM - C423)

Classification of sound absorbers

NEN-EN-ISO 11654

A 0.90 | 0.95 | 1.0

B 0.80 | 0.85

C 0.60 | 0.65 | 0.70 | 0.75

D 0.03 | 0.55

E 0.15 | 0.25